

DH-IPC-HFW5442T-ASE

4MP Pro AI IR Bullet Network Camera



System Overview

Pro AI series contains Face Detection, Perimeter Protection and People Counting functions. Powered by deep-learning Artificial Intelligence algorithms, significantly improved accuracy. Active Deterrence and Full Color camera are also in this series. Meanwhile, the series features starlight and smart IR technology. This series fully protected from dust and water, certified to IP67 standard.

Functions

Face Detection

Face Detection is a software application that automatically captures faces from within a digital image or a video frame from a video source. Dahua cameras use advanced deep learning algorithms and are trained by a large number of face data sources, enabling the camera to locate faces quickly and accurately from the video source and capture facial images.

Perimeter Protection

Dahua's Perimeter Protection functions significantly improved accuracy. Perimeter Protection reduces false alarms and decreases pixel count requirements for object detection. Perimeter Protection features custom tripwires based on object type for automation in limited access areas such as pedestrian or vehicle-only zones. This combination of advanced AI analytics and real-time alerts to a desktop or to a mobile client reduces system requirements and resources resulting in greater surveillance system efficiency.

People Counting

People Counting function uses advanced image processing technology to capture depth information from within images. The camera pairs this information with deep learning algorithms to analyze and detect human bodies and track target objects in real time. The camera provides statistics for separate individuals' entrance and exit with up to 95% counting accuracy.

- 1/1.8" 4Megapixel progressive scan CMOS
- H.265 & H.264 triple-stream encoding
- 25/30 fps@2688 × 1520, 50/60 fps@1080P (1920 × 1080)
- WDR (140 dB), Day/Night (ICR), 3D DNR, AWB, AGC, BLC
- Multiple network monitoring: Web viewer, CMS (DSS/PSS) & DMSS
- 2.8 mm fixed lens (3.6 mm, 6.0 mm optional)
- 1/1 Alarm in/out, 1/1 audio in/out
- Max. IR LEDs Length 50 m
- Micro SD memory, IP67, IK10



ePoE technology

The ePoE technology of Dahua, designed internally, adopts advanced 2D-PAM3 coding modulation from physical layer, and realizes full duplex transmission over 800 meters at the speed of 10Mbps, or 300 meters at the speed of 100Mbps via Cat 5 or coaxial cable media. Besides, it supports PoE and PoC power supply technology which has greatly simplified construction and wiring. Dahua ePoE technology offer a new way to accomplish long distance transmission between IP camera and network switch. It allows more flexible surveillance system design, improves reliability and saves construction and wiring cost.

Protection (IP67, IK10, wide voltage)

The camera allows for $\pm 30\%$ input voltage tolerance, suitable for the most unstable conditions for outdoor applications. Its 6KV lightning rating provides effective protection for both the camera and its structure against lightning. Subjected and certified to rigorous dust and immersion tests (IP67) and impact tests (IK10), the camera is the choice for installation in even the most unforgiving environments.

Купити: <https://dahua-technology-dh-ipc-hfw5442tp-ase-3-6-mm>

Інтернет-магазин Pipl.ua

Україна, 02000, м. Київ, пр-т Голосіївський 84

+38 073 600 500 2

+38 063 309 84 82

Україна, 65000, м. Одеса, ул. Генуезька 24Д, корпус 1

+38 067 177 40 11

order@pipl.ua

Technical Specification						
Camera						
Image Sensor		1/1.8" 4Megapixel progressive scan CMOS				
Effective Pixels		2688 (H) × 1520 (V)				
RAM/ROM		512 MB/128 MB				
Scanning System		Progressive				
Electronic Shutter Speed		Auto/Manual, 1/3 s–1/100000 s				
Minimum Illumination		0.002 Lux@F1.6				
IR Distance		Distance up to 50 m (164 ft)				
IR On/Off Control		Auto/Manual				
IR LEDs		4				
Lens						
Lens Type		Fixed-focal				
Mount Type		Board-in				
Focal Length		2.8 mm, 3.6 mm, 6.0 mm				
Max. Aperture		F1.6				
Angle of View		H: 113°, V: 60°/H: 89°, V: 48°/H: 56°, V: 31°				
Aperture Type		Fixed				
Close Focus Distance		1.3 m (4.27 ft)/1.9 m (6.23 ft)/3.8 m (12.47 ft)				
DORI Distance	Lens	Detect	Observe	Recognize	Identify	
	2.8mm	58m(190ft)	23m(75ft)	12m(39ft)	6m(20ft)	
	3.6mm	72m(236ft)	29m(95ft)	14m(46ft)	7m(23ft)	
	6mm	113m(371ft)	45m(148ft)	23m(75ft)	11m(36ft)	
Pan/Tilt/Rotation						
Pan/Tilt/Rotation Range		Pan: 0°–360°; Tilt: 0°–90°; Rotation: 0°–360°				
Artificial Intelligence						
Face Detection		Support face image capture				
Perimeter Protection		Tripwire, intrusion (Recognition of vehicle and people), fast moving, loitering detection, parking detection and people gathering				
People Counting		Support Line crossing/Region/Queueing people counting; Support 4 accesses independent detection, 4 areas independent detection				
General Intelligence						
Event Trigger		Motion detection, Video tampering , Scene changing, Network disconnection , IP address conflict, Illegal Access, Storage anomaly				
General Intelligence		Object Abandoned/Missing				
Heat Map		Yes				
Video						
Compression		H.265,H.264,H.264B,H.264H, MJPEG (sub stream)				
Smart Codec		Yes				

Streaming Capability		3 Streams	
Resolution		2688 × 1520/2560 × 1440/2304 × 1296/1080P (1920 × 1080)/1.3M (1280 × 960)/720P (1280 × 720)/D1 (704 × 576/704 × 480)/VGA (640 × 480)/CIF (352 × 288/352 × 240)	
Frame Rate		Main Stream: 2688 × 1520 (1 fps–25/30 fps) 2560 × 1440 (1 fps–25/30 fps) 1920 × 1080 (1 fps–50/60 fps)	
		Sub Stream: D1 (1 fps–25/30 fps) D1 (1 fps–50/60 fps)	
		Third Stream: 1080P (1 fps–16 fps)	
Bit Rate Control		CBR/VBR	
Bit Rate		H.264: 32 Kbps–8192 Kbps H.265: 19 Kbps–8192 Kbps	
Day/Night		Auto(ICR)/Color/B/W	
BLC Mode		BLC/HLC/WDR (140 dB)	
White Balance		Auto/Natural/Street Lamp/Outdoor/Manual	
Gain Control		Auto/Manual	
Noise Reduction		3D DNR	
Motion Detetion		Off/On (4 Zone, Rectangle)	
Region of Interest		Off/On (4 Zone)	
Electronic Image Stabilization (EIS)		N/A	
Smart IR		Yes	
Defog		Yes	
Flip		0°/90°/180°/270°	
Mirror		Off/On	
Privacy Masking		Off/On (4 Area, Rectangle)	
Audio			
Compression		G.711a, G.711Mu, G.726, AAC, G.723	
Network			
Ethernet		RJ-45 (10/100 Base-T)	
Protocol		IPv4;IPv6;HTTP;HTTPS;TCP;UDP;ARP;RTP;RTSP;RTCP ;RTMP;SMTP;FTP;SFTP;DHCP;DNS;DDNS;QoS;UPnP ;NTP;Multicast;ICMP;IGMP;NFS;PPPoE;802.1x;SNMP	
Interoperability		ONVIF (Profile S/Profile G/Profile T), CGI, Milstone, Genetec, P2P	
Streaming Method		Unicast/Multicast	
Max. User Access		20 Users	
Edge Storage		NAS;FTP;SFTP Micro SD card 256 GB	
Web Viewer		IE (versions newer than IE8), Chrome, Firefox, Safari (versions newer than Safari 12)	
Management Software		Smart PSS, DSS, DMSS	
Smart Phone		iOS, Android	

Certifications

Certifications

CE-LVD: EN60950-1
 CE-EMC: Electromagnetic Compatibility Directive
 2014/30/EU
 FCC: 47 CFR FCC Part 15, Subpart B
 UL/CUL: UL60950-1 CAN/CSA C22.2 No.60950-1-07

Interface

Audio Interface 1/1 channel In/Out

RS485 N/A

Alarm 1 channel In: 5mA 5V DC
 1 channel Out: 300mA 12V DC

Electrical

Power Supply DC 12V ($\pm 30\%$), PoE (802.3af) (Class 0)

Power Consumption <9.5W

Environmental

Operating Conditions -30°C to $+60^{\circ}\text{C}$ (-22°F to $+140^{\circ}\text{F}$)/Less than 95% RH

Storage Conditions -30°C to $+60^{\circ}\text{C}$ (-22°F to $+140^{\circ}\text{F}$)

Ingress Protection IP67

Vandal Resistance IK10

Construction

Casing Metal

Dimensions 244.1 mm \times 79.0 mm \times 75.9 mm (9.61" \times 3.11" \times 2.99")

Net Weight 0.815 kg (1.80 lb)

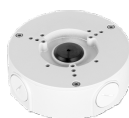
Gross Weight 1.08 kg (2.38 lb)

Ordering Information

Type	Part Number	Description
4MP camera	DH-IPC-HFW5442TP-ASE	4MP Pro AI IR Bullet Network Camera, WDR, PAL
	DH-IPC-HFW5442TN-ASE	4MP Pro AI IR Bullet Network Camera, WDR, NTSC
	IPC-HFW5442TP-ASE	4MP Pro AI IR Bullet Network Camera, WDR, PAL
	IPC-HFW5442TN-ASE	4MP Pro AI IR Bullet Network Camera, WDR, NTSC
Accessories (optional)	PFA130-E	Junction box
	PFA152-E	Pole Mount
	PFA151	Corner Mount

Accessories

Optional:



PFA130-E
Junction box



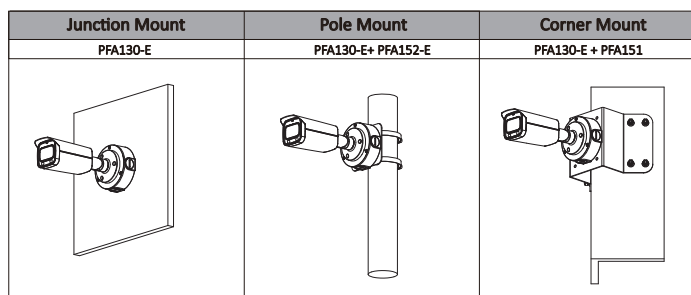
PFA152-E
Pole Mount



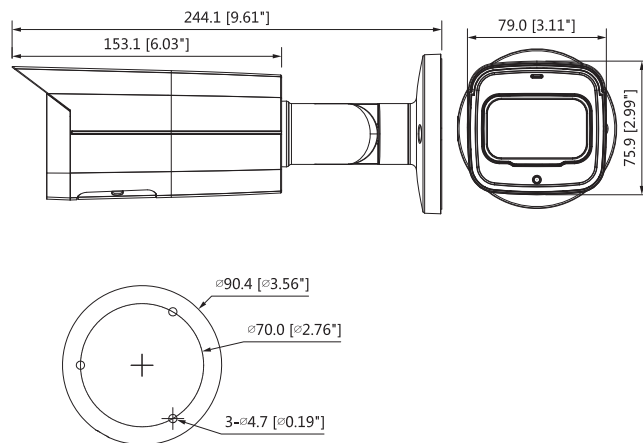
PFA151
Corner Mount



LR1002
ePoE Over Coax Converter



Dimensions (mm[inch])



Купити: <https://dahua-technology-dh-ipc-hfw5442tp-ase-3-6-mm>

Інтернет-магазин Pipl.ua

Україна, 02000, м. Київ, пр-т Голосіївський 84

+38 073 600 500 2

+38 063 309 84 82

Україна, 65000, м. Одеса, ул. Генуезька 24Д, корпус 1

+38 067 177 40 11

order@pipl.ua

