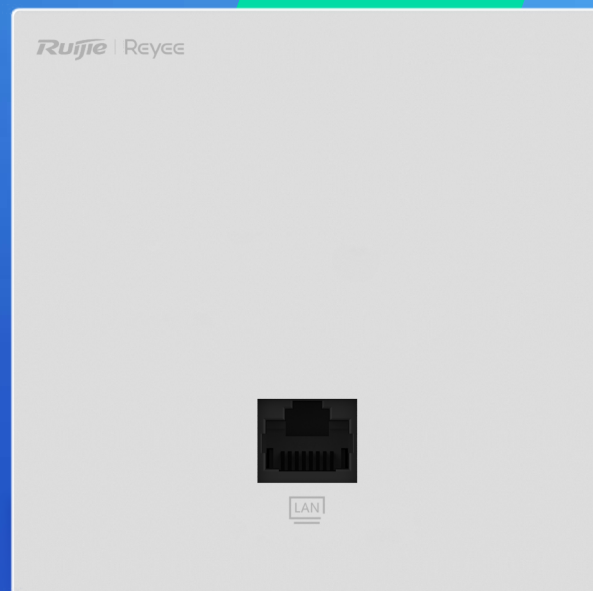


RG-RAP1261

Reyee Wi-Fi 6 AX3000 Ultra-Thin Wall Plate Access Point

DATASHEET



Highlights

- Wi-Fi 6, 2976Mbps, 2* GE, 86mm Ultra-Thin Design
- Dual-radio performance, gigabit wireless wall-mounted AP
- Better experience with Cooling Patent Technology
- Easy installation, 86mm standard compatible
- Capable of Reyee Mesh and 802.11K/V
- Powerful Standalone Portal via Ruijie Cloud

Highlight Features

AX3000 Dual-Band Ultra-Thin Wall Plate Access Point

RG-RAP1261



Experience Wi-Fi 6, Experience Gigabit Internet

New upgrade to AX3000, Speed Test reaches 950Mbps, delivering the fastest possible internet experience



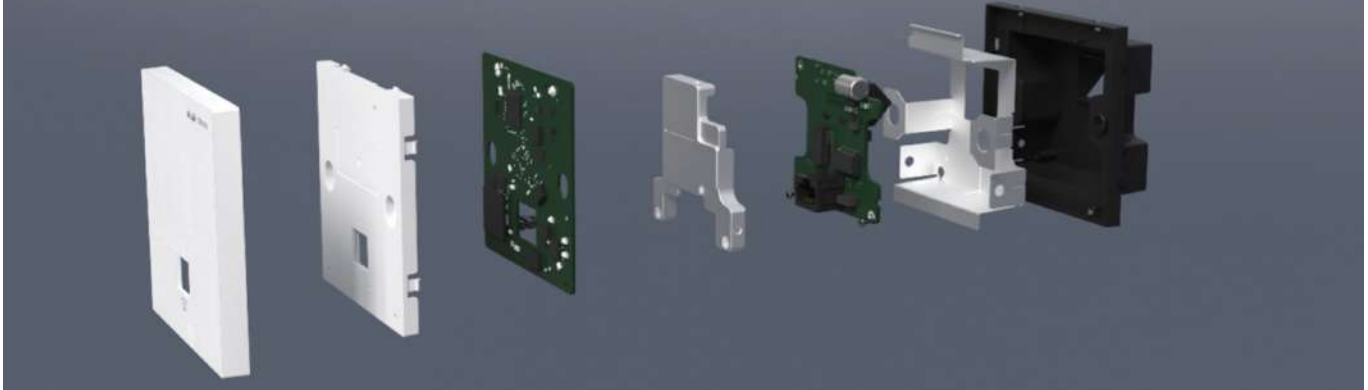
Easy Installation, Worldwide Compatible



Highlight Features

Unprecedented This Design with 8.5mm and Patent Technology

Thinner, Cooler, Stronger. Averagely reduced 7.c in working mode

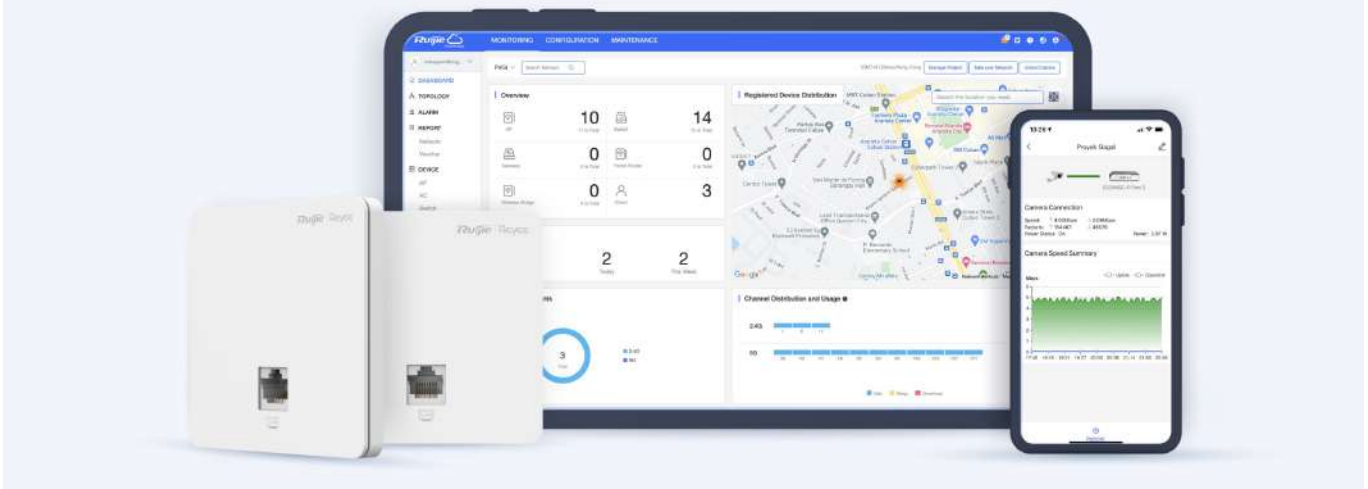


Smart AI Roaming Enhances Wireless Experience Anywhere You Go



Cloud, Make Your Business Easy

- Self-organizing network
- Cloud portal authentication
- Remote monitoring and maintenance
- Upgrade firmware via Cloud
- APP library dynamically update



Specifications

Basic Features

Wi-Fi Standards	802.11a/n/ac/ax 802.11b/g/n/ax
MIMO	2.4 GHz, 2x2, MU-MIMO 5 GHz, 2x2, MU-MIMO
Max. Data Rate	2.4 GHz: 574 Mbps 5 GHz: 2402 Mbps
Number of Antennas	5
Antenna Type	Built-in omnidirectional antennas
Antenna Gain	2.4 GHz: 1.6 dBi; 5 GHz: 4.13 dBi Note The peak gain mentioned above refers to the gain of a single antenna.
Transmit Power	2.4 GHz: 20 dBm 5 GHz: 30 dBm Note The transmitted power may vary based on local laws and regulations.
Fixed Ports	1 x 10/100/1000Base-T Ethernet uplink port 1 x 10/100/1000Base-T Ethernet downlink ports 1 x Reset hole
Max. Number of Concurrent STAs	512
Recommended Number of Concurrent STAs	110
Max. Number of SSIDs	8
Supported Frequency Bands	802.11b/g/n/ax: 2.400 GHz to 2.483 GHz 802.11a/n/ac/ax: 5.150 GHz to 5.350 GHz, 5.470 GHz to 5.725 GHz, 5.725 GHz to 5.850 GHz Note: Country-specific restrictions apply.

Software Features

WLAN Basic Features

Power Adjustment	✓
Channel Bandwidth	2.4 GHz: Auto/20 MHz/40 MHz 5 GHz: Auto/20 MHz/40 MHz/80 MHz/160 MHz

Specifications

Software Features	
Roaming	Layer 2 roaming Layer 3 roaming 802.11k/v roaming
OFDMA	✓
Beamforming	✓
Target Wake Time (TWT)*	✓
Wi-Fi Multimedia (WMM)	✓
Radar Signal Detection and Frequency Hopping (DFS)	✓
WLAN Security	
Wi-Fi Password	16 characters
Security Mode	WAP-PSK, WAP2-PSK, and WPA-WAP2-PSK
Blocklist and Allowlist	✓
Enhanced User Experience	
Wi-Fi Optimization	✓
STA Limiting	✓
Removing Low-RSSI STAs	✓
Removing Low-RSSI STAs	✓
Syslog Recording Why Users Lose Connection	✓
Auto Channel and Power Adjustment on Cloud	✓
RSSI Threshold for STA Access	✓
Load Balancing	✓
Networks	
Network Access Mode	PPPoE Client DHCP Client Static IP

Specifications

Software Features

Avoidance of WAN IP Address Conflicts ✓

VLAN Port-based VLAN
VLAN over 802.1Q
TV projection screen

DHCP Server ✓

System

Cloud Management ✓

App Management ✓

App Upgrade ✓

App Restart ✓

Scheduled Restart ✓

Default Access/Password 10.44.77.253
(No password required by default.)

Local Upgrade ✓

Online Upgrade ✓

Backup ✓

Factory Reset ✓

Language Chinese
English

System Log ✓

Diagnostics ✓

Network Check ✓

Hardware Features

LED 1 x System status LED

Reset Hole 1 x Reset hole

Dimensions (W x D x H) 86 mm x 86 mm x 42.4 mm (3.39 in. x 3.39 in. x 1.67 in.)

Specifications

Hardware Features

Weight	0.16 kg (without the mounting bracket)
Installation Method	In-wall mounting
Pole Diameter	N/A
Power Supply	IEEE 802.3af/at PoE
Max. Power Consumption	10.2 W
PoE Power Budget	N/A

Environment

Operating Temperature	0°C to 40°C (32°F to 104°F)
Storage Temperature	-40°C to +70°C (-40°F to +158°F)
Operating Humidity	5% to 95% RH (non-condensing)
Storage Humidity	5% to 95% RH (non-condensing)
Ingress Protection Rating (IP Rating)	IP41
Surge Protection	+/-4kV
MTBF	400,000 hours

Package Contents

Package Information	RG-RAP1261
RG-RAP1261 Access Point	1
Power Adapter	N/A
User Manual	1
Cat5e UTP Cable	N/A
Screw	2
Certification	CE
Warranty Card	1

Ordering Information

Model	Description
RG-RAP1261	<p>Dual-radio Wi-Fi 6 wall plate AP,1 x 1GE LAN/PoE uplink port 1 x 1GE LAN downlink port Built-in omnidirectional antennas 2.4 GHz + 5 GHz: 2976 Mbps IEEE 802.11a/b/g/n/ac Wave1/Wave2/ax-compliant Wi-Fi 160 MHz channel bandwidth In-wall mounting Router and AP modes 802.11k/v Roaming Self-Organizing Network (SON) Network management through Ruijie Cloud App IEEE 802.3af/802.3at PoE (15 W/30 W) (PoE adapter purchased separately)</p>

Ruijie | Rcycc

 **Redefine your easy network**

Copyright ©2000-2023 Ruijie Networks Co., Ltd. All rights reserved.

No part of this document may be reproduced or transmitted in any form or any means without prior written consent of Ruijie Networks Co., Ltd.

Notice

This content is applicable only to regions outside the China mainland. Ruijie Networks Co., Ltd. reserves the right to interpret this content.

The information contained herein is subject to change without notice. Nothing herein should be construed as constituting an additional warranty. Ruijie Networks Co., Ltd. shall not be liable for technical or editorial errors or omissions contained herein.



Ruijie Networks Co., Ltd.
Building 19, Juyuanzhou Industrial Park, No.618
Jinshan Road, Cangshan District, Fuzhou, Fujian, China
Website: <https://www.ruijienetworks.com>