

RG-RAP2266

Reyee Wi-Fi 6 AX3000 Indoor Ceiling-Mount Access Point

DATASHEET



Highlights

- Dual-Band performance, gigabit wireless Ceiling-mounted AP
- Capable of Reyee Mesh and 802.11K/V/R
- Easy installation, rotating and done
- New circular aesthetics, more in line with the hotel decoration style
- Powerful Standalone Portal via Ruijie Cloud

Highlight Features

Wi-Fi AX3000 Dual-band Round Ceiling AP

RG-RAP2266



Seamless Roaming, Ever Smart Like This

Smart AI Roaming, Based on Cloud Algorithm and Technology of 802.11k/v/r, Guaranteed Smooth and Lag-Free Internet



Installation With Rotating, Quick and Easy



Highlight Features

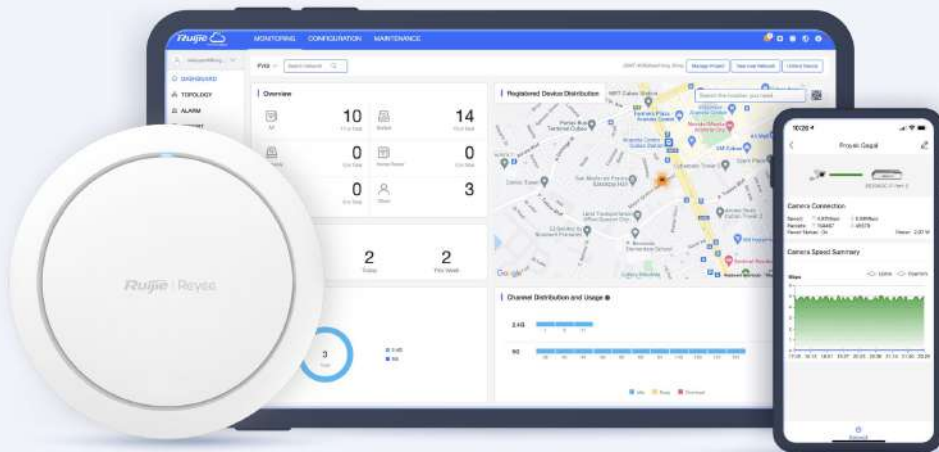
Easily Install Extra AP with Reye Mesh

Less wiring, more relaxing



Cloud, Make Your Business Easy

- Self-organizing network
- Cloud portal authentication
- Remote monitoring and maintenance
- Upgrade firmware via Cloud
- APP library dynamically update



Specifications

Basic Features

Wi-Fi Standards	Wi-Fi6 (IEEE 802.11ax) Wi-Fi5 (IEEE 802.11ac Wave 2) Wi-Fi4(IEEE 802.11n) IEEE 802.11a IEEE 802.11b/g
MIMO	2.4GHz, 2x2 ,MU-MIMO 5GHz, 2x2 ,MU-MIMO
Max. Wi-Fi Speed	2.4GHz: 574Mbps 5GHz: 2402Mbps
Antenna	5
Antenna Type	Built-In Omnidirectional
Antenna Gain	2.4 GHz:3.53dBi 5 GHz:5.15dBi Note The peak gain mentioned above refers to the gain of a single antenna.
Transmit Power	Frequency bands using and the max EIRP: Note: Country specific restrictions apply European Union & United Kingdom 2400-2483.5 MHz, EIRP ≤ 20 dBm 5150-5350 MHz, EIRP ≤ 23 dBm 5470-5725 MHz, EIRP ≤ 30 dBm United States: 2400-2483.5 MHz, max output power ≤ 30dBm & EIRP ≤ 36 dBm 5150-5250 MHz, max output power ≤ 30dBm & EIRP ≤ 36 dBm 5250-5350 MHz, max output power < 24dBm & EIRP ≤ 30 dBm 5470-5725 MHz, max output power < 24dBm & EIRP ≤ 30 dBm 5725-5825 MHz, max output power ≤ 30dBm & EIRP ≤ 36 dBm Myanmar : 2400-2483.5 MHz, EIRP ≤ 23 dBm 5725-5825 MHz, EIRP ≤ 30 dBm Thailand: 2400-2483.5 MHz, EIRP ≤ 20 dBm 5150-5350 MHz, EIRP ≤ 23 dBm 5470-5725 MHz, EIRP ≤ 30 dBm 5725-5825 MHz, EIRP ≤ 30 dBm Indonesia: 2400-2483.5 MHz, EIRP ≤ 27 dBm 5150-5350 MHz, EIRP ≤ 23 dBm 5725-5825 MHz, EIRP ≤ 23 dBm Egypt: 2400-2483.5 MHz, EIRP ≤ 20 dBm 5150-5350 MHz, EIRP ≤ 23 dBm

Specifications

Basic Features

Fixed Ports	1×10/100/1000 Base-T port 1×DC port 1×Reset button
Max. Clients	512
Recommended Clients	110
Max. SSIDs	8
Recommended Wi-Fi Coverage Radius	2.4GHz: 40 meters 5GHz: 70 meters The Wi-Fi coverage is related to the installation environment of the access point.
Max. Wi-Fi Coverage Radius	150 meters
Operation Frequency Bands	802.11b/g/n/ax: 2.400 GHz to 2.4835 GHz 802.11a/n/ac/ax:5.150 GHz to 5.350 GHz, 5.470 GHz to 5.725 GHz , 5.725 GHz to 5.850 GHz country-specific restrictions apply

Software Features

WLAN Basic Features

Power Adjustment	✓
Frequency Bandwidth	2.4 GHz: Auto/20/40 MHz 5 GHz: Auto/20/40/80/160 MHz
Roaming	Layer 2 roaming Layer 3 roaming 802.11k/v/r
OFDMA	✓
Beamforming	✓
Target wake time (TWT)*	Not Support
WMM	✓
Radar Signal Detection and Frequency Hopping (DFS)	✓
WLAN Security	
Wi-Fi Password	16 bits

Specifications

Software Features

Security Mode WPA-PSK, WPA2-PSK, WPA/WPA2-PSK;

Blacklist and Whitelist ✓

Prevent Fragmentation Attack Not Support

Prevent ICMP Attack Not Support

Enhanced User Experience

Wi-Fi Optimization ✓

STA Limit ✓

Removing Low-RSSI STAs ✓

Adjusting Sending Rate of Beacon and Probe Response ✓

Syslog Recording Why Users Lose Connection ✓

Auto Channel and Power Adjustment on Cloud ✓

RSSI Threshold for STA Access ✓

Load Balancing ✓

Networks

Network Access Mode PPPoE Client
DHCP Client
Static IP

Avoidance of WAN IP Address Conflicts Not Support

VLAN ✓

DHCP Server ✓

System

Cloud Management ✓

APP Management ✓

Specifications

Hardware Features

APP Upgrade	✓
APP Restart	✓
Scheduled Restart	✓
Default Access/Password	10.44.77.254 The factory status password: admin
Local Upgrade	✓
Online Upgrade	✓
Backup	✓
Factory Reset	✓
Language	Chinese English
System Log	✓
Diagnostics	✓
Network Check	✓

Physical

LED Indicator	1× system LED indicator
Buttons	1×Reset button
Dimensions (W × D × H)	220 mm x 220 mm x 52.6 mm (8.66 in. x 8.66 in. x 2.07 in., without the mounting bracket)
Weight	≤ 0.5 kg (Without Mounting Bracket)
DC Port Dimensions	Outer Diameter: 6.3 mm Inner Diameter: 2.0 mm Length: 9.8 mm
Installation	Ceiling-Mountable
Mounting Bracket Dimensions (W × D × H)	113.5 mm x 113.5 mm x 13.5 mm
Mounting Hole Pattern	80 mm

Specifications

Environment

Mounting Hole Diameter	6.5 mm
Pole Diameter	NA
Power Supplies	IEEE 802.3at PoE DC 12V/2A
Power Consumption	≤ 18W
PoE Power Budget	NA
Operating Temperature	0°C to 40°C
Storage Temperature	-40°C to 70°C
Operating Humidity	5% to 95% Noncondensing
Storage Humidity	5% to 95% Noncondensing
IP(Ingress Protection)	NA
Port Surge	+/-2kV
MTBF	>400000H

Ruijie | RCYCC

 **R**edefine your **e**asy network

Copyright ©2000-2023 Ruijie Networks Co., Ltd. All rights reserved.

No part of this document may be reproduced or transmitted in any form or any means without prior written consent of Ruijie Networks Co., Ltd.

Notice

This content is applicable only to regions outside the China mainland. Ruijie Networks Co., Ltd. reserves the right to interpret this content.

The information contained herein is subject to change without notice. Nothing herein should be construed as constituting an additional warranty. Ruijie Networks Co., Ltd. shall not be liable for technical or editorial errors or omissions contained herein.



Ruijie Networks Co., Ltd.
Building 19, Juyuanzhou Industrial Park, No.618 Jinshan
Road, Cangshan District, Fuzhou, Fujian, China
Website: <https://www.ruijienetworks.com>