

Pan/Tilt Home Security Wi-Fi Camera

1080P
Full HD

Tapo C200

Motion Detection and Tracking

Person
Detection

Baby Crying
Detection

Night Vision
up to 30 ft



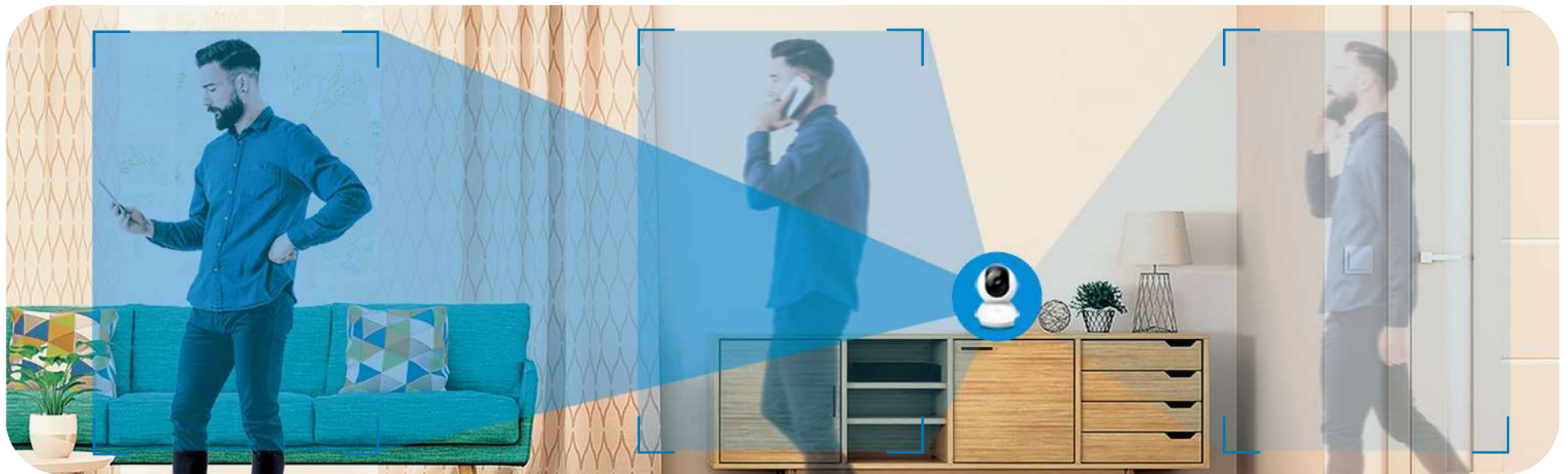
works with |  amazon alexa

 works with
Google Home

// Highlight

Motion Detection and Tracking

Whenever the Pan/Tilt Home Security Wi-Fi Camera detects motion, it will automatically follow the subject, keeping it within the camera's field of view.



// Features



Person Detection

Notify you when a person is detected.



Night Vision up to 30 ft

Provide a visual distance of up to 30 ft in total darkness.



Field of View

A 360° horizontal range to get a detailed look at your room and capture every moment.



Two-Way Audio

Communicate in real time through a built-in microphone and speaker.



Local microSD Storage[†]

Store up to 512 GB of video on a microSD card.



Baby Crying Detection

Notify you when your baby cries.



1080p Full High Definition

Provide greater sharpness and clarity.



Customizable Block Zones

Set customizable block zones to keep private areas from being monitored.



Cloud Storage Supported[‡]

Store videos by using cloud storage services.

[†]microSD card needs to be purchased separately. Actual storage capacity depends on the size of the microSD card used.

[‡]Subscribe for cloud storage at <https://www.tapo.com/tapocare/>

For more information, please visit <https://www.tapo.com/>

All brands and product names are trademarks or registered trademarks of their respective holders. Specifications are subject to change without notice.

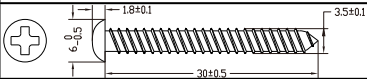
©2024 TP-Link

// Specifications

Camera	Image Sensor	1/2.8" Progressive Scan CMOS Not Starlight Sensor
	Lens	Focal Length: 4 mm Aperture: F2.0 Field of View: 88.3° (Diagonal), 75.2° (Horizontal), 40.8° (Vertical)
	Night Vision	850 nm IR LED (30 ft / 10 m)
	Day/Night Switch	IR-Cut Filter with Auto-Switching
	Lighting	/
	Interface & Button	1× RESET Button 1× microSD Card Slot (Up to 512 GB)
	Hub Compatibility	/
Video & Audio	Maximum Resolution	1080P HD (1920 x 1080 px)
	Frame Rate	15 fps
	Digital Zoom	None
	Video Compression	H.264
	Live View	Yes
Video & Audio	Image Enhancement	3DNR WDR

Video & Audio	Audio Input & Output	Built-in Microphone and Speaker
	Audio Communication	Two-Way Audio with Noise Cancellation
	Siren Volume	88 dB (Level measured at 4-inch/10-cm distance)
Storage	Local Storage	microSD Card Slot on Camera (Up to 512 GB)
	Cloud Storage	Tapo Care Cloud Storage Services (Subscription required)
Detection & Notification	Sensor	/
	AI Detection	Motion Detection Person Detection Baby Crying Detection
	Activity Zones	Yes *Only works with Motion Detection.
	Output Notification	System Notification System Notification with Snapshot (Tapo Care Services)
Network	Network Connectivity	Connect via Wi-Fi
	Wireless Connectivity	IEEE 802.11b/g/n, 2.4 GHz Wi-Fi
	Transmission Rate	11b: 11 Mbps 11g: 54 Mbps 11n: 72.2 Mbps
	Protocol	TCP/IP, DHCP, ICMP, DNS, NTP, HTTPS, TCP, UDP
	Max. Distance Between Hub and Camera/Doorbell	/

Network	Ethernet Port	/
	RTSP	Yes
	ONVIF	Yes (Profile S)
Security	Security	On-Device Machine Learning 128-bit AES Encryption with SSL/TLS WPA/WPA2-PSK
Power	Power Source	9V DC Power Adapter
	Input Voltage	100-240 V, 50/60 Hz
	Output Voltage	9 V, 0.6 A (DC Power)
	DC Power Connector Size	Inside Ø: 2.1 mm Outside Ø: 5.5 mm
	Power Cord Length	3 m
	Typical Power Consumption	5 W
	Maximum Power Consumption	5.4 W
General	Certifications	CE, FCC, NCC, BSMI, NTRA, JRF, VCCI, RCM, IC, KC, ONVIF, CE-LVD
	Smart Integration	Google Assistant, Amazon Alexa
	Weather Resistance	/
	System Requirements	Tapo App: iOS 9.0 or higher, Android 4.4 or higher

Network	Mounting Options	Tabletop Ceiling-Mounted
	Operating Temperature	0 °C ~ 40 °C (32 °F ~ 104 °F)
	Storage Temperature	-40 °C ~70 °C (-40 °F ~ 158 °F)
	Operating Humidity	10%~90% RH, Non-condensing
	Storage Humidity	5%~90% RH, Non-condensing
	Charging Temperature	\
	Mounting Screw Size	
	Dimensions	3.36 × 3.42 × 4.63 in (85.4 × 86.8 × 117.7 mm)
	Weight	6.7 oz / 190 g
	Package Contents	Tapo C200 Camera Power Adapter Quick Start Guide Mounting Anchors Mounting Screws Mounting Template Camera Base